



Park View Terrace | Rugeley | WS15 2RN

Offers In The Region Of £190,000

 **Webbs**  
estate agents

## Summary

**\*\* IDEAL FOR FIRST TIME BUYERS \*\* POPULAR LOCATION \*\* THREE BEDROOMS \*\* LIVING ROOM \*\* KITCHEN DINER \*\* OFF ROAD PARKING \*\* CLOSE TO AMENITIES \*\* VIEWING ADVISED \*\***

WEBBS ESTATE AGENTS are pleased to market this attractive three-bedroom semi-detached home presents an excellent opportunity for first-time buyers, young families, or investors alike. Conveniently positioned close to local amenities, reputable schools, transport links and within walking distance of Rugeley Town Centre, the property offers comfortable and practical living accommodation throughout.

The internal accommodation briefly comprises an entrance hallway, a spacious living room, and a fitted kitchen diner providing ample space for family dining and entertaining. To the first floor are three well-proportioned bedrooms and a family bathroom.

Externally, the property benefits from a generous rear garden, ideal for outdoor enjoyment, together with off-road parking for one vehicle.

## Key Features

- IDEAL FOR FIRST TIME BUYERS
- THREE BEDROOMS
- KITCHEN DINER
- CLOSE TO AMENITIES
- POPULAR LOCATION
- LIVING ROOM
- OFF ROAD PARKING
- VIEWING ADVISED

## Rooms and Dimensions

### Hallway

### Living Room

13'8" x 12'1" (4.17 x 3.69)

### Kitchen

16'9" x 8'5" (5.12 x 2.57)

### Landing

### Bedroom 1

10'7" x 9'9" (3.24 x 2.99)

### Bedroom 2

9'1" x 10'10" (2.78 x 3.32)

### Bedroom 3

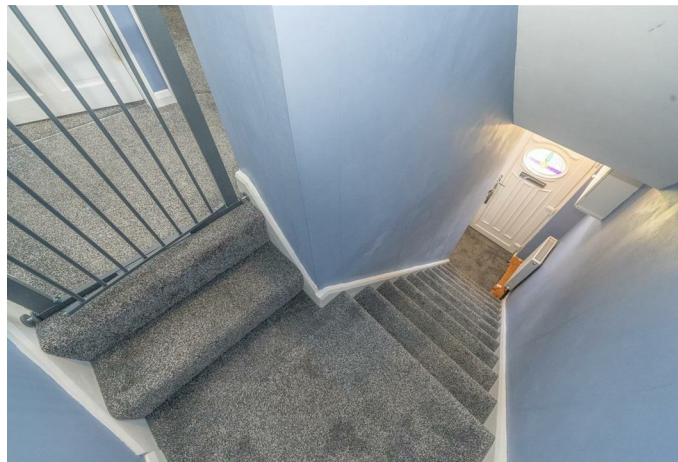
7'6" x 7'8" (2.30 x 2.36)

### Bathroom

6'1" x 4'11" (1.87 x 1.52)

### Identification Checks (R)







Webbs Estate Agents - endeavour to maintain accurate depictions of properties in Virtual Tours, Floor Plans and descriptions, however, these are intended only as a guide and purchasers must satisfy themselves by personal inspection.

